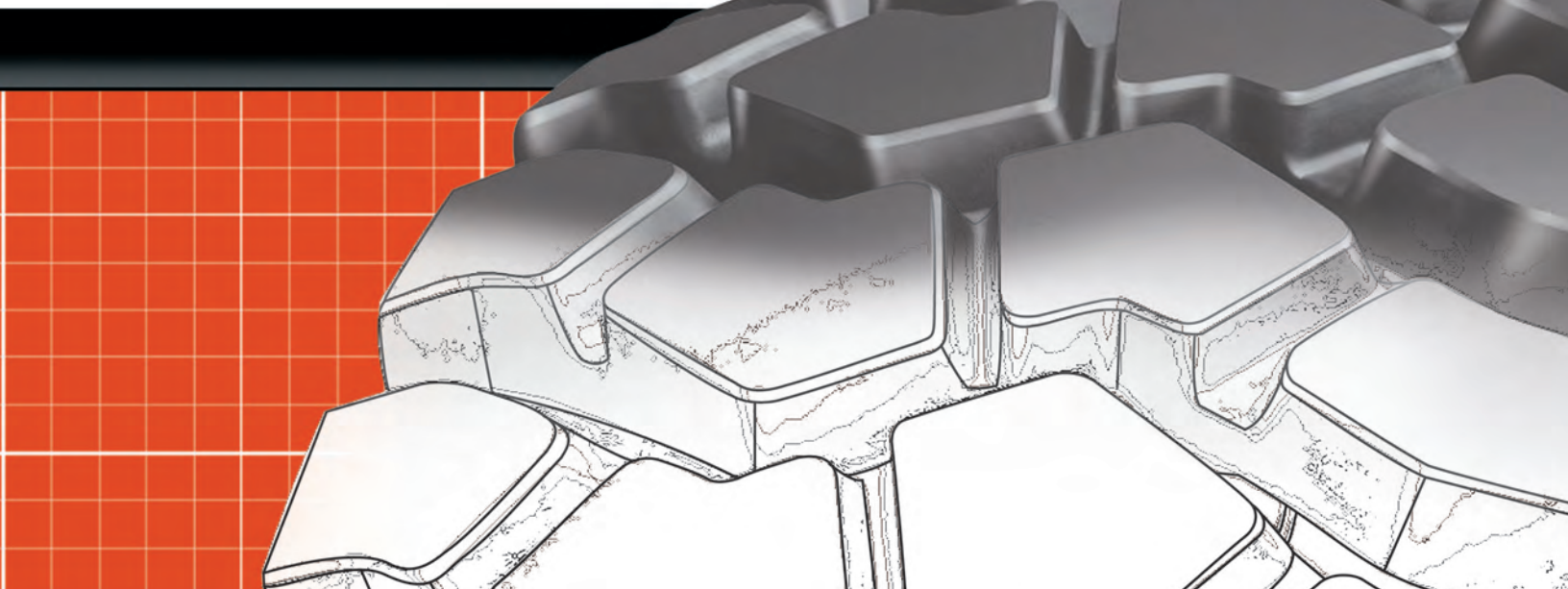




OTR PRICE BOOK 2011



YOKOHAMA TIRE CORPORATION

2011

OTR PRICE BOOK

Effective January 1, 2011

TABLE OF CONTENTS

OFF-THE-ROAD RADIAL Page 3
OFF-THE-ROAD BIAS Page 9

OTR CUSTOMER SERVICE

For Dealer Orders Call: (714) 870-3888
Dealer Fax Orders: (714) 870-3950



COMPOUND CODE LEGEND

CPC.....CUT PROTECTED COMPOUND
 RER.....REGULAR
 HRH.....HEAT RESISTANT
 CPBP.....CP COMPOUND LIGHT SERVICE
 CCZV.....CP STEEL BREAKER

CPUS.....CP COMPOUND LOAD & CARRY
 CPOP.....CP COMPOUND OIL RESISTANCE
 CPSP.....CP COMPOUND ANTI IMPACT BREAK
 CPC/STL.....CP COMPOUND STEEL BREAKER
 HRV.....SUPER HEAT RESISTANCE

ID.....INDUSTRIAL SPEC PARTICULAR SERVICE
 RET.....MORE HEAT RESISTANT THAN RER
 CPID.....CUT PROTECTIVE INDUSTRIAL SPEC. PARTICULAR SERVICE
 CPSC.....CUT PROTECTIVE AND SIDEWALL CUT PROTECTIVE

OFF THE ROAD RADIAL



RB01

- For use on wheel cranes and all-terrain cranes
- Lower fuel consumption
- Tough casing construction
- * For mobile crane. Not for highway use

INFLATED DIMENSIONS

Size	Part #	Compound	Ply	Groove Depth	Rim Size	Overall Diameter (inches)	Overall Width (inches)	Static Loaded Radius (inches)	Static Loaded Width (inches)	Ship Weight	Base Price
385/95R25	00131	CPC	170E	26	10.00x25-1.5	53.3	15.1	24.8	16.5	321.20	\$1,818.67
445/95R25	00129*	CPC	177E	27	11.25x25-2.0	58.5	17.5	27.2	19.2	436.28	\$2,757.06
505/95R25	00133	CPC	183E	29	13.00x25-2.5	63.1	20.2	29.1	22.3	596.20	\$2,998.03

* DOT approved for highway use.



RB01 TUBE TYPE

- * For mobile crane. Not for highway use

INFLATED DIMENSIONS

Size	Part #	Compound	Ply	Groove Depth	Rim Size	Overall Diameter (inches)	Overall Width (inches)	Static Loaded Radius (inches)	Static Loaded Width (inches)	Ship Weight	Base Price
14.00R24	00130	CPC	***	26	10.00Wx24	53.3	15.1	24.6	17.0	341.90	\$1,779.00



RB03 TUBE TYPE

- * For mobile crane. Not for highway use
- * Limited supply

INFLATED DIMENSIONS

Size	Part #	Compound	Ply	Groove Depth	Rim Size	Overall Diameter (inches)	Overall Width (inches)	Static Loaded Radius (inches)	Static Loaded Width (inches)	Ship Weight	Base Price
14.00R24	00134	RER	***	26	10.00Wx24	53.3	15.1	24.6	17.0	340.40	\$1,779.00



RT21 G-2

- Designed with a non-directional block pattern for use on motor graders
- Good traction and flotation on soft and muddy surface

Size	Part #	Compound	Ply	Groove Depth	Rim Size	INFLATED DIMENSIONS				Ship Weight	Base Price
						Overall Diameter (inches)	Overall Width (inches)	Static Loaded Radius (inches)	Static Loaded Width (inches)		
14.00R24	02101	RER	*	31	8.00TGx24SDC	53.0	15.1	23.9	17.0	294.30	\$1,412.91



RT31/RT31 + L2/L3

- For use on articulated dump trucks and loaders
- Non-directional tread pattern provides better traction

Size	Part #	Compound	Ply	Groove Depth	Rim Size	INFLATED DIMENSIONS				Ship Weight	Base Price
						Overall Diameter (inches)	Overall Width (inches)	Static Loaded Radius (inches)	Static Loaded Width (inches)		
20.5R25*	03168	CPC	*	26	17.00x25-2.0	58.7	21.1	25.9	24.0	547.00	\$2,820.17
23.5R25	03171	CPC	*	45	19.50X25-2.5	63.0	24.1	28.3	26.5	695.70	\$3,601.69
26.5R25*	03174	CPC	*	57	22.00X25-3	68.1	26.4	29.9	30.1	1,016.11	\$5,548.85

*RT31+



RT31 + E-3

Size	Part #	Compound	Ply	Groove Depth	Rim Size	INFLATED DIMENSIONS				Ship Weight	Base Price
						Overall Diameter (inches)	Overall Width (inches)	Static Loaded Radius (inches)	Static Loaded Width (inches)		
20.5R25*	03167	CPC	**	26	17.00x25-2.0	58.7	21.1	26.6	23.1	547.00	\$2,926.19
23.5R25	03170	CPC	**	45	19.50X25-2.5	63.0	24.1	27.7	27.3	712.50	\$3,795.39
26.5R25*	03173	CPC	**	57	22.00X25-3	68.1	26.4	30.6	29.4	1,016.11	\$5,722.37
750/65R25	03169	CPC	**	55	25X24.00-3.0	63.8	29.7	28.5	32.3	975.89	\$5,836.01

*RT31+

RB31 L-3

- For use on loaders and dozers
- Provides abrasion resistance and excellent traction on soft surfaces
- Deepest tread depth in its class

- Buttress side protection
- Improved road stability
- Low heat generation
- Industry's strongest belt package
- Flat base hexagon bead construction (strong twist stiffness)



Size	Part #	Compound	Ply	Groove Depth	Rim Size	INFLATED DIMENSIONS		Static Loaded Radius (inches)	Static Loaded Width (inches)	Ship Weight	Base Price
						Overall Diameter (inches)	Overall Width (inches)				
17.5R25	03150	CPC	*	39	14.00x25-1.5	53.1	17.4	23.9	19.7	362.80	\$1,911.55
20.5R25	03151	CPC	*	43	17.00x25-2.0	58.1	20.4	25.9	24.0	540.10	\$2,917.41
23.5R25	03154	CPC	*	45	19.50x25-2.5	63.0	24.1	28.7	27.3	760.00	\$3,697.20
26.5R25	03157	CPC	*	49	22.00x25-3.0	68.1	26.4	30.0	30.0	1,066.05	\$5,535.18
29.5R25	03128	CPC	*	60	25.00x25-3.5	72.8	29.7	31.7	34.1	1,298.00	\$7,664.98

RB31 E-3

- For use on articulated dump trucks
- Provides abrasion resistance and excellent traction on soft surfaces
- Deepest tread depth in its class
- Buttress side protection

- Improved road stability
- Low heat generation
- Industry's strongest belt package
- Flat base hexagon bead construction (strong twist stiffness)



Size	Part #	Compound	Ply	Groove Depth	Rim Size	INFLATED DIMENSIONS		Static Loaded Radius (inches)	Static Loaded Width (inches)	Ship Weight	Base Price
						Overall Diameter (inches)	Overall Width (inches)				
20.5R25	03152	CPC	**	43	17.00x25-2.0	58.1	20.9	26.6	24.0	540.10	\$3,020.99
23.5R25	03155	CPC	**	45	19.50x25-2.5	63.0	24.1	28.7	27.3	776.80	\$3,945.86
26.5R25	03191	CPC	**	49	22.00x25-3.0	68.1	26.4	30.9	29.3	1,068.00	\$5,689.66
29.5R25	03127	CPC	**	60	25.00x25-3.5	72.8	29.7	31.7	34.1	1,298.00	\$7,791.77

RL31 E-3



- For use on articulated dump trucks
- Rock flush pattern and shoulders protector provide excellent cut resistance

Size	Part #	Compound	Ply	Groove Depth	Rim Size	INFLATED DIMENSIONS			Ship Weight	Base Price	
						Overall Diameter (inches)	Overall Width (inches)	Static Loaded Radius (inches)			
17.5R25	03160	CPC	**	40	14.00X25-1.5	52.8	17.5	24.5	19.1	396.80	\$2,372.90
20.5R25	03175	CPC	**	44	17.00X25-2.0	58.9	21.1	27.0	22.5	626.90	\$3,099.86
23.5R25	03172	CPC	**	51	19.50X25-2.5	63.0	25.2	28.3	26.2	895.90	\$4,082.40

RT41 L-4



- Specially designed for front end loaders.
- The tread pattern design with non-directional block pattern provides both abrasion resistance and excellent traction on soft, rocky and gravel surfaces.

Size	Part #	Compound	Ply	Groove Depth	Rim Size	INFLATED DIMENSIONS			Ship Weight	Base Price	
						Overall Diameter (inches)	Overall Width (inches)	Static Loaded Radius (inches)			
23.5R25	04123	T/L	*	68	19.50x25-2.5	63.5	23.9	27.9	27.2	809.81	\$4,749.14
26.5R25	04124	T/L	*	76	22.00x25-3.0	68.2	26.4	29.8	30.0	1,084.00	\$7,077.67
29.5R25	04125	T/L	*	82	25.00x25-3.5	73.4	29.7	32.8	33.7	1,433.56	\$8,327.59

RT41 E-4

- Specially designed for articulated dump truck
- The tread pattern design with non-directional block pattern provides both abrasion resistance and excellent transaction and soft rocky and gravel surface



Size	Part #	Compound	Ply	Groove Depth	Rim Size	INFLATED DIMENSIONS				Ship Weight	Base Price
						Overall Diameter (inches)	Overall Width (inches)	Static Loaded Radius (inches)	Static Loaded Width (inches)		
23.5R25	04122	CPC	**	68	19.50X25-2.5	63.5	23.9	28.7	26.5	809.81	\$4,964.55
26.5R25	04120	CPC	**	76	22.00X25-3.0	68.2	26.4	28.7	29.1	1,083.76	\$7,148.76
29.5R25	04121	CPC	**	82	25.00X25-3.5	73.4	29.7	33.3	32.8	1,421.18	\$8,560.85

RR41 E-4

- Designed for yard service vehicles, especially straddle carriers.



Size	Part #	Compound	Ply	Groove Depth	Rim Size	INFLATED DIMENSIONS				Ship Weight	Base Price
						Overall Diameter (inches)	Overall Width (inches)	Static Loaded Radius (inches)	Static Loaded Width (inches)		
16.00R25	04151	ID	***	66	11.25X25-2.0	59.0	16.7	25.8	19.6	594.40	\$4,357.49

RB41 E-4

- For use on dump trucks and articulated dump trucks
- Deep treads with side protector
- Excellent traction on soft surface



Size	Part #	Compound	Ply	Groove Depth	Rim Size	INFLATED DIMENSIONS				Ship Weight	Base Price
						Overall Diameter (inches)	Overall Width (inches)	Static Loaded Radius (inches)	Static Loaded Width (inches)		
16.00R25	04150	CPC	**	57	11.25X25-2.0	60.3	17.7	27.8	19.7	553.20	\$3,324.93

RB42 E-4



- Specially designed for dump trucks.
- Tread pattern design with non-direction block pattern and deep tread provides both abrasive resistance and excellent traction on muddy and soft surfaces.
- High resistance to wearing ensures long tread life.

Size	Part #	Compound	Ply	Groove Depth	Rim Size	INFLATED DIMENSIONS				Ship Weight	Base Price
						Overall Diameter (inches)	Overall Width (inches)	Static Loaded Radius (inches)	Static Loaded Width (inches)		
18.00R33	04201	CP	**	70	13.00X33-2.5	73.2	20.0	33.8	22.4	967.94	\$6,417.38
24.00R35	04202	CP	**	80	17.00x35-3.5	84.9	26.1	38.2	29.3	1,555.13	\$11,287.42

RL42 E-4



- Specially designed for dump trucks.
- The tread pattern design is unidirectional with straight groove & rock flush pattern which provides good combination of high cut resistance and heat resistance.
- Deep tread with side protectors.

Size	Part #	Compound	Ply	Groove Depth	Rim Size	INFLATED DIMENSIONS				Ship Weight	Base Price
						Overall Diameter (inches)	Overall Width (inches)	Static Loaded Radius (inches)	Static Loaded Width (inches)		
18.00R33	42000	CPC	**	63	13.00x33-2.5	73.2	20.0	34.0	22.4	965.83	\$6,417.38
24.00R35	03176	CPC	**	74	17.00X35-3.5	84.9	26.1	38.2	29.3	1,719.36	\$11,287.42
27.00R49	03178	CPC	**	84	19.50X49-3.5	105.2	30.1	47.6	33.5	2,871.66	\$15,866.08

OFF THE ROAD BIAS

Y103 G-2

- For use on motor graders
- Features optimum traction and flotation on muddy surfaces



Size	Part #	Compound	Ply	Groove Depth	Rim Size	INFLATED DIMENSIONS				Ship Weight	Base Price
						Overall Diameter (inches)	Overall Width (inches)	Static Loaded Radius (inches)	Static Loaded Width (inches)		
13.00-24	10356	RER	12	34	8.00TGx24 SDC	50.7	13.8	22.3	15.5	173.30	\$760.89
13.00-24	10380	IDTT	16	34	8.00TGx24 SDC	50.7	13.8	22.3	15.5	194.33	\$888.69
14.00-24	10357	RER	12	36	10.00TGx24 SDC	53.2	15.6	23.4	17.4	206.20	\$803.72
16.00-24	10358	RER	12	43	10.00Gx24 SDC	57.7	17.5	25.4	19.4	320.70	\$1,473.34

Y103 L-2

- For use on loaders & dozers to provide good traction & flotation in muddy ground
- Directionally-opposed lug produces self-cleaning action



Size	Part #	Compound	Ply	Groove Depth	Rim Size	INFLATED DIMENSIONS				Ship Weight	Base Price
						Overall Diameter (inches)	Overall Width (inches)	Static Loaded Radius (inches)	Static Loaded Width (inches)		
15.5-25	10350	RER	12	32	12.00x25-1.3	50.6	15.4	22.6	17.0	202.30	\$887.51
17.5-25	10352	RER	12	34	14.00x25-1.5	53.7	17.1	23.6	18.8	238.90	\$967.05
17.5-25	10379	CPC	16	34	14.00x25-1.5	53.7	17.1	23.6	18.8	255.90	\$1,145.08
20.5-25	10361	RER	12	40	17.00x25-2.0	58.9	21.1	25.5	23.0	324.80	\$1,704.37
20.5-25	10362	RER	16	40	17.00x25-2.0	58.9	21.1	25.5	23.0	346.20	\$1,813.93
23.5-25	10363	RER	12	45	19.50x25-2.5	63.8	24.1	27.0	26.8	467.20	\$2,273.93
23.5-25	10364	RER	16	45	19.50x25-2.5	63.8	24.1	27.0	26.8	517.10	\$2,414.17



Y526 L-3

- For use on loaders and dozers
- Unique asymmetrical tread pattern and reinforced outer sidewall help prevent cuts

Size	Part #	Compound	Ply	Groove Depth	Rim Size	INFLATED DIMENSIONS				Ship Weight	Base Price
						Overall Diameter (inches)	Overall Width (inches)	Static Loaded Radius (inches)	Static Loaded Width (inches)		
20.5-25	52630	CPC/STL	16	44	17.00x25-2.0	58.5	21.3	26.7	22.6	608.50	\$2,132.78
23.5-25	52632	CPC	16	56	19.50x25-2.5	63.4	24.2	28.0	26.1	737.50	\$2,737.00



Y575 L-3

- For use on loaders & dozers in mining, construction & logging operations
- Improved stability
- Increased bead area durability
- Lengthened service life

Size	Part #	Compound	Ply	Groove Depth	Rim Size	INFLATED DIMENSIONS				Ship Weight	Base Price
						Overall Diameter (inches)	Overall Width (inches)	Static Loaded Radius (inches)	Static Loaded Width (inches)		
17.5-25	57505	CPC	12	38	14.00x25-1.5	52.8	17.1	23.4	18.6	259.70	\$1,132.65
17.5-25	57506	CPC	16	38	14.00x25-1.5	52.8	17.1	23.4	18.6	277.10	\$1,213.80
20.5-25	57501	CPC	12	41	17.00x25-2.0	58.9	20.9	26.1	22.5	362.20	\$1,875.28
20.5-25	57502	CPC	16	41	17.00x25-2.0	58.8	20.9	26.1	22.5	379.00	\$1,915.58
20.5-25	57508	CPC	20	41	17.00x25-2.0	58.8	20.9	26.1	22.5	427.47	\$2,231.95
23.5-25	57503	CPC	12	53	19.50x25-2.5	63.2	23.8	27.9	25.4	534.80	\$2,516.18
23.5-25	57504	CPC	16	53	19.50x25-2.5	63.2	23.8	27.9	25.4	581.30	\$2,696.29
23.5-25	57507	CPC	20	53	19.50x25-2.5	63.2	23.8	27.9	25.4	612.00	\$2,804.06
26.5-25	57509	CPC	20	54	22.00x25-3.0	68.5	27.2	30.3	28.9	874.50	\$4,335.84
26.5-25	57512	CPC	24	54	22.00x25-3.0	68.5	27.2	30.3	28.9	909.70	\$4,638.96
29.5-25	57514	CPC	28	62	25.00x25-3.0	73.0	30.1	32.0	32.7	1,255.50	\$5,759.27

Y67 G-3

- For use on motor graders on rock, coal & log-strewn terrain
- Tough tread prevents cuts & snags
- Large ground-contact provides long service life



INFLATED DIMENSIONS

Size	Part #	Compound	Ply	Groove Depth	Rim Size	Overall Diameter (inches)	Overall Width (inches)	Static Loaded Radius (inches)	Static Loaded Width (inches)	Ship Weight	Base Price
13.00-24	06719	RER	12	35	8.00TGx24	50.4	13.1	23.1	14.1	203.10	\$761.49
14.00-24	06720	RER	16	35	10.00VAx24 SDC	53.2	15.0	24.6	15.3	260.57	\$1,154.19
16.00-24	06721	RER	16	43	10.00VAx24 SDC	58.1	17.5	27.0	18.4	404.20	\$2,048.34

CAUTION: Most loader and grader tires of 24" rim diameter are designed for SDC (semi-drop center) rims and they are identified by "FOR SDC RIMS" or "SDC RIM" on the tire sidewall. Tires for SDC rims and those for flat base type rims are different in shape and not interchangeable

Y67 L-3

- For use on loaders and dozers on rock, coal & log-strewn terrain
- Tough tread protects from cuts & snags
- Wide ground-contact area lengthens service life



INFLATED DIMENSIONS

Size	Part #	Compound	Ply	Groove Depth	Rim Size	Overall Diameter (inches)	Overall Width (inches)	Static Loaded Radius (inches)	Static Loaded Width (inches)	Ship Weight	Base Price
13.00-24	06701	RER	16	35	8.00TGx24	50.4	13.7	23.1	15.1	261.63	\$1,005.34
15.5-25	06703	CPC	12	35	12.00x25-1.3	51.5	15.7	23.2	17.0	222.70	\$1,005.34
17.5-25	06705	CPC	12	38	14.00x25-1.5	53.1	17.4	23.6	19.0	264.60	\$1,004.78
17.5-25	06706	CPC	16	38	14.00x25-1.5	53.1	17.4	23.6	19.0	282.20	\$1,106.37
20.5-25	06723	CPC	16	42	17.00x25-2.0	59.0	20.8	25.6	22.8	365.60	\$1,791.35
23.5-25	06726	CPC	16	53	19.50x25-2.5	63.2	23.5	27.9	25.0	583.00	\$2,558.71
33.5-33	16718	CPC	44	59	28.00x33-4.0	87.9	34.4	39.4	35.6	1,911.40	\$10,912.30

Y67 E-3 TUBE TYPE

- For use on dump trucks and scrapers
- Ideal for hauling over rock, coal and log-strewn terrain



Size	Part #	Compound	Ply	Groove Depth	Rim Size	INFLATED DIMENSIONS		Static Loaded Radius (inches)	Static Loaded Width (inches)	Ship Weight	Base Price
						Overall Diameter (inches)	Overall Width (inches)				
10.00-20	16716	CPC	14	26	7.50x20	41.7	11.0	19.6	11.6	129.70	\$657.81
12.00-24	06712	CPC	16	33	8.50VX24	48.4	12.0	22.6	13.0	175.86	\$834.11
14.00-24	06714	CPC	20	35	10.00Wx24	53.0	15.0	24.6	16.1	270.74	\$1,399.94
14.00-24	06715	CPC	24	35	10.00Wx24	53.0	15.0	24.6	16.1	285.95	\$1,454.31
14.00-24	06716	CPC	28	35	10.00Wx24	53.0	15.0	24.6	16.1	302.74	\$1,560.46

Y67 E-3

- For use on loaders and dozers on rock, coal & log-strewn terrain
- Tough tread protects from cuts & snags
- Wide ground-contact area lengthens service life



Size	Part #	Compound	Ply	Groove Depth	Rim Size	INFLATED DIMENSIONS		Static Loaded Radius (inches)	Static Loaded Width (inches)	Ship Weight	Base Price
						Overall Diameter (inches)	Overall Width (inches)				
16.00-24	06722	CPC	24	43	11.25x24-2.0	58.1	17.5	27.0	18.4	428.40	\$2,376.71
14.00-25	06707	CPC	20	35	10.00x25-1.5	53.0	15.0	24.6	16.1	278.33	\$1,483.66
14.00-25	06708	RER	24	35	10.00x25-1.5	53.0	15.0	24.6	16.1	291.84	\$1,539.88
16.00-25	06709	CPC	24	43	11.25x25-2.0	58.1	17.5	27.0	18.4	432.40	\$2,310.99
16.00-25	06710	CPC	28	43	11.25x25-2.0	58.1	17.5	27.0	18.4	450.56	\$2,491.57
18.00-25	06731	CPC	28	49	13.00x25-2.5	63.0	20.1	29.0	21.0	554.30	\$3,191.00
18.00-25	06732	CPC	32	49	13.00x25-2.5	63.0	20.1	29.0	21.0	557.90	\$3,404.52
26.5-25	06756	RER	20	57	22.00x25-3.0	68.1	27.6	30.6	28.8	844.20	\$4,101.33
26.5-25	06759	RER	26	57	22.00x25-3.0	68.1	27.6	30.6	28.8	844.10	\$4,526.58
29.5-25	06762	RER	28	62	25.00x25-3.0	73.9	30.6	32.4	32.5	1,068.20	\$5,707.33
26.5-29	06760	RER	26	51	22.00x29-3.0	72.2	27.2	32.6	28.5	893.67	\$5,469.04
29.5-29	16740	RER	28	62	25.00x29-3.5	77.6	30.7	33.4	33.1	1,270.00	\$6,135.79
29.5-29	06764	CPC	34	62	25.00x29-3.5	76.9	30.3	34.5	31.7	1,236.00	\$7,017.48

Y67 E-3 CONT'D

- For use on dump trucks and scrapers
- Tough tread resists cuts and snags



Size	Part #	Compound	Ply	Groove Depth	Rim Size	INFLATED DIMENSIONS				Ship Weight	Base Price
						Overall Diameter (inches)	Overall Width (inches)	Static Loaded Radius (inches)	Static Loaded Width (inches)		
33.25-29	16752	CPC	26	58	27.00X29-3.5	81.9	33.4	36.4	34.4	1,546.70	\$6,999.05
33.25-29	16753	CPC	32	58	27.00X29-3.5	81.9	33.4	46.4	34.4	1,597.26	\$7,540.44
33.25-29	16767	CPC	38	58	27.00X29-3.5	81.9	33.4	36.4	34.4	1,698.10	\$8,207.76
18.00-33	06750	RER	32	52	13.00x33-2.5	70.9	20.5	33.1	21.8	722.30	\$4,610.00
33.5-33	06767	RER	32	59	28.00x33-4.0	87.9	34.4	39.7	35.8	1,670.00	\$9,324.93
33.5-33	06768	RER	38	59	28.00x33-4.0	87.9	34.4	39.7	35.8	1,807.70	\$9,569.88
37.5-33	06796	RER	42	64	32.00x33-4.5	94.1	38.2	41.7	40.2	2,136.58	\$10,926.43
24.00-35	06746	RER	36	61	17.00x35-3.5	83.9	26.1	38.4	27.8	1,382.50	\$6,668.63
29.5-35	06765	RER	28	50	25.00x35-3.5	83.5	30.6	38.0	32.2	1,464.90	\$7,069.35
29.5-35	06766	RER	34	50	25.00x35-3.5	83.5	30.6	38.0	32.2	1,464.60	\$7,695.41
33.25-35	16711	CPC	32	59	27.00x35-3.5	88.5	33.6	39.5	35.4	1,690.30	\$8,916.66
33.25-35	06770	RER	38	59	27.00x35-3.5	88.5	33.6	39.5	35.4	1,800.40	\$9,505.25
37.25-35	16701	CPC	30	64	31.00X35-4.0	94.1	37.8	41.7	39.8	2,123.70	\$10,750.00
37.25-35	16751	CPBP	30	64	31.00X35-4.0	94.1	37.8	41.7	39.8	1,851.50	\$9,985.62
37.25-35	16715	CPC	36	64	31.00X35-4.0	94.1	37.8	41.7	39.8	2,150.43	\$11,530.33
37.5-39	16710	CPC	44	68	32.00x39-4.5	99.0	38.1	44.8	40.0	2,540.52	\$12,975.13
37.5-39	16712	RER	52	68	32.00x39-4.5	99.0	38.1	44.8	40.0	2,605.70	\$13,302.15
24.00-49	06787	HRH	36	60	17.00x49-3.5	98.7	25.9	45.7	27.7	1,732.00	\$9,467.88
27.00-49	16703	RET	42	63	19.50x49-4.0	104.1	29.5	48.0	31.5	2,155.50	\$12,111.00
27.00-49	06789	HRH	42	63	19.50X49-4.0	104.1	29.5	48.0	31.5	2,161.40	\$12,111.00

Y67 E-3 SPECIAL APPLICATION/STEEL BREAKER



Size	Part #	Compound	Ply	Groove Depth	Rim Size	INFLATED DIMENSIONS				Ship Weight	Base Price
						Overall Diameter (inches)	Overall Width (inches)	Static Loaded Radius (inches)	Static Loaded Width (inches)		
33.25-29	16766	CPC/STL	32	58	29X27.00-3.5	81.9	33.4	36.4	34.4	1,690.92	\$8,052.22
37.25-35	16745	CPSP	30	64	31.00X35-4.0	94.1	37.8	41.7	39.8	2,318.42	\$11,200.00
37.25-35	16714	CPC/STL	36	64	31.00X35-4.0	94.1	37.8	41.7	39.8	2,244.48	\$12,100.00
37.5-39	16741	CPSP	52	68	32.00X39-4.5	99.0	38.1	44.8	40.0	2,976.40	\$13,318.07
37.5-39	16750	CPC/STL	52	68	32.00X39-4.5	99.0	38.1	44.8	40.0	2,780.67	\$13,700.00

Y565 E-3



- For hauling over rock, coal and log-strewn terrain.
- Tough tread resists cuts and snags.
- Less heat buildup enables smooth running over longer distances than the deep tread (E-4) types.

Size	Part #	Compound	Ply	Groove Depth	Rim Size	INFLATED DIMENSIONS				Ship Weight	Base Price
						Overall Diameter (inches)	Overall Width (inches)	Static Loaded Radius (inches)	Static Loaded Width (inches)		
36.00-51	03179	RET	58	65	26.00X51.5-5	126.0	41.1	57.5	43.3	4,899.79	\$27,206.55
36.00-51	03180	RET	66	65	26.00X51.5-5	126.0	41.1	57.5	43.3	5,203.90	\$28,795.99

Y67ET L-4



- For use on loaders & dozers on rock, coal & log-strewn terrain
- Deep tread provides strong resistance to cuts & wear

Size	Part #	Compound	Ply	Groove Depth	Rim Size	INFLATED DIMENSIONS				Ship Weight	Base Price
						Overall Diameter (inches)	Overall Width (inches)	Static Loaded Radius (inches)	Static Loaded Width (inches)		
29.5-29	06774	CPC	28	99	25.00X29-3.5	79.3	30.3	35.6	32.4	1,653.60	\$7,587.20

Y545 L-4



- For use on loaders & dozers on rock, coal & log-strewn terrain
- Deep tread has good wear & cut resistance

Size	Part #	Compound	Ply	Groove Depth	Rim Size	INFLATED DIMENSIONS				Ship Weight	Base Price
						Overall Diameter (inches)	Overall Width (inches)	Static Loaded Radius (inches)	Static Loaded Width (inches)		
23.5-25	54504	CPC	16	71	19.50x25-2.5	65.4	24.5	29.9	26.0	861.20	\$3,859.80
23.5-25	54503	CPC	20	71	19.50x25-2.5	65.4	24.5	29.9	26.0	896.00	\$4,022.77
23.5-25	54502	CPC	24	71	19.50x25-2.5	65.4	24.5	29.9	26.0	921.80	\$4,174.80
26.5-25	54505	CPC	20	86	22.00x25-3.0	70.3	27.7	31.5	30.1	1,156.60	\$5,061.93
26.5-25	54506	CPC	24	86	22.00x25-3.0	70.3	27.7	31.5	30.1	1,197.70	\$5,370.13
26.5-25	54514	CPC	32	86	22.00x25-3.0	70.3	27.7	31.5	30.1	1,220.20	\$5,952.35
29.5-25	54501	CPC	28	94	25.00x25-3.0	74.8	30.9	33.3	33.1	1,490.20	\$7,238.27
35/65-33	54513	CPUS	24	79	28.00x33-3.5	82.0	35.5	37.5	36.4	2,219.50	\$10,112.00
35/65-33	54512	CPUS	30	79	28.00x33-3.5	82.0	35.5	37.5	36.4	2,244.40	\$11,677.05
35/65-33	54515	CPUS	42	79	28.00x33-3.5	82.0	35.3	37.5	36.4	2,394.80	\$12,050.00
45/65-45	54510	CPC	38	88	36.00x45-4.5	107.5	45.3	48.8	47.4	4,492.52	\$22,179.39
45/65-45	54511	CPC	50	88	36.00x45-4.5	107.5	45.3	48.8	47.4	4,804.39	\$24,464.17
45/65-45	54507	CPC	58	88	36.00x45-4.5	107.5	45.3	48.8	47.4	4,944.46	\$24,629.61

Y523 E-4

- For use on dump trucks
- Specially designed for use under highly abrasive conditions



Size	Part #	Compound	Ply	Groove Depth	Rim Size	INFLATED DIMENSIONS				Ship Weight	Base Price
						Overall Diameter (inches)	Overall Width (inches)	Static Loaded Radius (inches)	Static Loaded Width (inches)		
16.00-25	02326	CPC	28	75	11.25X25-2.0	60.6	17.4	28.5	18.4	607.09	\$2,638.00
18.00-25	52303	CPC	28	77	13.00x25-2.5	65.0	20.4	30.4	21.3	723.30	\$3,477.54
18.00-25	52304	CPC	32	77	13.00x25-2.5	65.0	20.4	30.4	21.3	817.70	\$3,674.28
18.00-33	52315	CPC	32	71	13.00x33-2.5	72.8	20.4	34.2	21.3	867.58	\$4,663.43
18.00-33	52318	RER	32	71	13.00x33-2.5	72.8	20.4	34.2	21.3	864.83	\$4,663.43
21.00-35	02302	CPC	36	80	15.00x35-3.0	80.5	23.2	37.2	24.5	1,221.40	\$6,517.07
21.00-35	52319	RER	36	80	15.00x35-3.0	80.5	23.2	37.2	24.5	1,208.00	\$6,517.07
21.00-35	02336	CCZV	36	80	15.00x35-3.0	80.5	23.2	37.2	24.5	1,355.40	\$6,871.93
24.00-35	52321	RER	36	81	17.00x35-3.5	84.5	26.2	39.0	28.0	1,483.70	\$8,134.49
24.00-35	02303	CPC	36	81	17.00x35-3.5	84.5	26.2	39.0	28.0	1,501.40	\$8,134.49
24.00-35	02320	CPC	42	81	17.00x35-3.5	84.5	26.2	39.0	28.0	1,584.40	\$8,681.66
24.00-35	52322	RER	42	81	17.00x35-3.5	84.5	26.2	39.0	28.0	1,551.30	\$8,681.66
24.00-49	52339	CPC	42	81	17.00x49-3.5	99.6	25.8	46.6	27.4	2,242.86	\$11,185.35
24.00-49	52371	RER	42	81	17.00x49-3.5	99.6	25.8	46.6	27.4	1,996.30	\$11,185.35
27.00-49	52388	RET	42	90	19.50x49-4.0	105.5	29.4	49.0	31.1	2,540.56	\$12,727.05
27.00-49	52372	RER	42	90	19.50x49-4.0	105.5	29.4	49.0	31.1	2,439.33	\$12,727.05
27.00-49	52340	CPC	42	90	19.50x49-4.0	105.5	29.4	49.0	31.1	2,623.18	\$12,727.05
27.00-49	52341	CPC	48	90	19.50x49-4.0	105.5	29.4	49.0	31.1	2,501.25	\$13,288.80
27.00-49	52373	RER	48	90	19.50x49-4.0	105.5	29.4	49.0	31.1	2,475.92	\$13,288.80
30.00-51	52342	CPC	46	106	22.00x51-4.5	113.2	33.4	52.7	35.3	3,612.70	\$16,340.71
30.00-51	02340	CPC	52	106	22.00x51-4.5	113.2	33.4	52.7	35.3	3,729.68	\$17,371.20
30.00-51	52390	RET	46	106	22.00x51-4.5	113.2	33.4	52.7	35.3	3,568.43	\$16,340.71
33.00-51	52376	RER	50	104	24.00x51-5.0	119.6	36.5	55.3	38.8	4,277.31	\$21,698.98
33.00-51	02329	HRV	58	104	24.00x51-5.0	119.6	36.5	55.3	38.8	4,350.74	\$23,434.90
33.00-51	02355	ID	58	104	24.00x51-5.0	119.6	36.5	55.3	38.8	4,740.54	\$26,236.58
36.00-51	52345	CPC	50	116	26.00x51-5.0	125.9	40.9	58.1	42.9	5,644.47	\$26,960.85



Y523 E-4 (continued)

Size	Part #	Compound	Ply	Groove Depth	Rim Size	INFLATED DIMENSIONS		Static Loaded Radius (inches)	Static Loaded Width (inches)	Ship Weight	Base Price
						Overall Diameter (inches)	Overall Width (inches)				
40.00-57	02307	RET	68	122	29.00x57-6.0	139.8	44.4	63.9	47.2	7,788.25	\$41,156.54
40.00-57	02308	RET	76	122	29.00x57-6.0	139.8	44.4	63.9	47.2	7,787.19	\$42,335.81
40.00-57	02306	CPC	76	122	29.00x57-6.0	139.8	44.4	63.9	47.2	7,978.50	\$42,335.81

Y523 E-4 SPECIAL APPLICATION & STEEL BREAKER

Size	Part #	Compound	Ply	Groove Depth	Rim Size	INFLATED DIMENSIONS		Static Loaded Radius (inches)	Static Loaded Width (inches)	Ship Weight	Base Price
						Overall Diameter (inches)	Overall Width (inches)				
18.00-33	02333	CPC/STL	36	71	13.00X33-2.5	72.8	20.4	34.2	21.3	1,088.90	\$6,206.37
24.00-35	52328	CPC/STL	36	81	17.00X35-3.5	84.5	26.2	39.0	28.0	1,661.40	\$8,377.10
24.00-35	02334	CPC/STL	36	81	17.00x35-3.5	84.5	26.2	39.0	28.0	1,640.00	\$8,377.10
24.00-35	52330	CPC/STL	42	81	17.00X35-3.5	84.5	26.2	39.0	28.0	1,661.40	\$8,838.08
27.00-49	02327	CPC/STL	42	90	19.50X49-4.0	105.5	29.4	49.0	31.1	2,595.49	\$13,173.42
27.00-49	02328	CPC/STL	48	90	19.50X49-4.0	105.5	29.4	49.0	31.1	2,610.51	\$13,823.25
33.00-51	52329	CPC/STL	50	104	24.00X51-5.0	119.6	36.5	55.3	38.8	4,974.63	\$21,803.99



Y567 E-4

Size	Part #	Compound	Ply	Groove Depth	Rim Size	INFLATED DIMENSIONS		Static Loaded Radius (inches)	Static Loaded Width (inches)	Ship Weight	Base Price
						Overall Diameter (inches)	Overall Width (inches)				
33.00-51	56750	CPC	58	104	24.00x51-5	119.6	36.5	55.3	38.8	4,478.80	\$26,236.58
33.00-51	56752	RET	58	104	24.00x51-5	119.6	36.5	55.3	38.8	4,478.80	\$26,236.58
33.00-51	56754	CPC	50	104	24.00X51-5	119.6	36.5	55.3	38.8	4,200.53	\$21,803.99
33.00-51	56755	RER	50	104	24.00X51-5	119.6	36.5	55.3	38.8	4,200.53	\$21,803.99
40.00-57	56751	RER	68	117	29.00x57-6	139.5	44.4	63.9	47.2	7,449.65	\$41,156.54
40.00-57	57653	CPC	68	117	29.00x57-6	139.5	44.4	63.9	47.2	7,494.10	\$41,156.54

Y524 L-5

- For use on loaders & dozers in high-abrasion conditions
- Unique profile with side protector for improved resistance to shoulder & sidewall cuts



Size	Part #	Compound	Ply	Groove Depth	Rim Size	INFLATED DIMENSIONS		Static Loaded Radius (inches)	Static Loaded Width (inches)	Ship Weight	Base Price
						Overall Diameter (inches)	Overall Width (inches)				
20.5-25	52401	RER	16	101	17.00x25-2.0	61.3	21.2	28.4	22.6	753.57	\$3,042.53
20.5-25	52402	RER	20	101	17.00x25-2.0	61.3	21.2	28.4	22.6	793.20	\$3,463.44
23.5-25	52403	RER	16	111	19.50x25-2.5	65.6	24.4	30.1	26.1	1,036.90	\$3,898.16
23.5-25	52404	CPC	20	111	19.50x25-2.5	65.6	24.4	30.1	26.1	1,068.60	\$4,091.72
26.5-25	52405	CPC	20	122	22.00x25-3.0	70.7	26.9	32.3	28.4	1,364.80	\$6,060.73
26.5-25	52406	RER	24	122	22.00x25-3.0	70.7	26.9	32.3	28.4	1,369.19	\$6,309.48
29.5-25	52431	CPC	28	140	25.00x25-3.0	75.1	30.5	34.2	32.5	1,870.15	\$7,928.25
29.5-25	52451	CPC/STL	28	140	25.00x25-3.0	75.1	30.5	34.2	32.5	1,930.84	\$8,260.36
29.5-29	52409	CPC	28	134	25.00x29-3.5	80.3	30.4	36.0	31.5	1,852.30	\$9,002.00
35/65-33	52433	CPBP	24	121	28.00x33-3.5	81.7	35.4	37.5	36.7	2,385.10	\$10,234.00
35/65-33	52444	CPBP	30	121	28.00x33-3.5	81.7	35.4	37.5	36.7	2,452.70	\$11,566.00
35/65-33	52436	CPC	42	121	28.00x33-3.5	81.7	35.4	37.5	36.7	2,686.10	\$13,446.39
40/65-39	52448	CPC	36	138	32.00x39-4.0	94.6	40.4	43.7	42.0	3,561.95	\$18,189.23
45/65-45	52427	CPBP	38	145	36.00x45-4.5	107.9	46.5	49.6	48.4	4,947.80	\$21,127.17
45/65-45	52420	CPC	50	145	36.00x45-4.5	107.9	46.5	49.6	48.4	5,418.00	\$26,366.79
45/65-45	52442	CPC/HD	58	145	36.00x45-4.5	107.9	46.5	49.6	48.4	6,229.70	\$28,465.63



Y524Z L-5 HALF SLICK

- For use on loaders and dozers
- Specially designed half slick asymmetric tread pattern provides superior tread and sidewall cut resistance

Size	Part #	Compound	Ply	Groove Depth	Rim Size	INFLATED DIMENSIONS				Ship Weight	Base Price
						Overall Diameter (inches)	Overall Width (inches)	Static Loaded Radius (inches)	Static Loaded Width (inches)		
35/65-33	52428	CPC	24	121	28.00x33-3.5	81.3	35.7	37.6	36.8	2,673.82	\$11,469.38
35/65-33	52432	CPC	30	121	28.00x33-3.5	81.3	35.7	37.6	36.8	2,725.52	\$12,700.00
35/65-33	52443	CPC	42	121	28.00x33-3.5	81.3	35.7	37.6	36.8	2,821.19	\$14,184.69
40/65-39	52437	CPC	36	133	32.00x39-4.5	94.5	40.4	43.6	41.8	3,833.17	\$18,700.00
45/65-45	52438	CPC	50	145	36.00x45-4.5	107.9	46.5	49.6	48.4	5,791.81	\$28,247.32
45/65-45	52440	CPC	58	145	36.00x45-4.5	107.9	46.5	49.6	48.4	5,971.76	\$30,016.81



PARTICULAR SERVICE Y20 PARTICULAR SERVICE TUBE TYPE

Size	Part #	Compound	Ply	Groove Depth	Rim Size	INFLATED DIMENSIONS				Ship Weight	Base Price
						Overall Diameter (inches)	Overall Width (inches)	Static Loaded Radius (inches)	Static Loaded Width (inches)		
9.00-20	02008	ID	14	23	7.00Tx20	40.3	10.2	18.9	11.4	95.40	\$559.29
12.00-20	02012	ID	18	25	8.50VX20	44.7	12.8	21.0	13.4	168.13	\$942.18

Y67

UNDERGROUND MINE SERVICE TIRE

- For use on loaders and underground vehicles
- Provides excellent traction
- Offers superior resistance to damage and wear



Size	Part #	Compound	Ply	Groove Depth	Rim Size	INFLATED DIMENSIONS		Static Loaded Radius (inches)	Static Loaded Width (inches)	Ship Weight	Base Price
						Overall Diameter (inches)	Overall Width (inches)				
10.00-20	16757	RER	24	26	7.50X20	41.7	11.0	19.6	11.6	150.30	\$857.37
12.00-20	16759	CPC/STL	24	32	8.50VX20	44.7	12.8	21.0	13.4	213.50	\$1,088.00
12.00-20	16786	CP	28	32	8.50VX20	44.7	12.8	21.0	13.4	237.85	\$1,280.58
1400-20	16765	CPSC	32	35	10.00WIX20	53.2	15.0	23.5	17.0	353.66	\$2,021.72
42X13-20	16782	IND-3	36	26	10.00WIX20	42.5	12.8	19.9	13.7	209.48	\$1,732.62
42X18-20	16783	IND-3 TT	36	27	15.00TX20	43.7	16.9	20.5	18.1	275.63	\$1,937.49
42X18-20	16788	IND-3 TL	36	27	15.00TX20	43.7	16.9	20.6	14.6	277.83	\$1,937.49
44X15-20	16784	IND-3	36	31	10.00WIX20	45.4	13.7	20.5	18.1	275.63	\$1,866.10
44X18-20	16763	ID	36	32	15.00TX20	45.3	17.4	20.7	18.2	372.70	\$2,158.48
50X20-20	16769	ID	36	35	15.00TX20	49.6	20.2	22.7	19.8	482.50	\$2,874.18
12.00-24	16787	ID	28	33	8.50X24	49.6	12.7	22.3	14.0	217.63	\$1,266.05

Y67

PARTICULAR SERVICE

- For use on straddle-carriers & towing tractors that require better traction than Y92



Size	Part #	Compound	Ply	Groove Depth	Rim Size	INFLATED DIMENSIONS				Ship Weight	Base Price
						Overall Diameter (inches)	Overall Width (inches)	Static Loaded Radius (inches)	Static Loaded Width (inches)		
12.00-20	06711 *	ID	18	32	8.50VX20	44.7	12.8	21.0	13.4	196.32	\$876.00
12.00-24	16746 *	ID	20	33	8.50Vx24	48.4	12.0	22.6	13.0	205.08	\$990.12
14.00-24	16780 *	ID	28	35	10.00Wx24	53.2	15.0	23.5	17.0	346.34	\$1,992.77
14.00-25	16747	ID	36	43	11.25x25-2.0	58.3	17.5	26.5	19.6	535.08	\$3,053.59
16.00-25	16775	ID	28	35	10.00x25-1.5	53.7	14.7	24.7	16.9	371.70	\$1,878.79
18.00-25	16719	ID	40	49	13.00x25-2.5	63.8	20.1	28.2	21.7	781.60	\$3,871.09
21.00-25	16742	ID	36	51	15.00x25-3.0	68.3	23.2	30.8	24.8	890.40	\$5,001.67
21.00-25	16743	ID	40	51	15.00x25-3.0	68.3	23.2	30.8	24.8	964.00	\$5,571.07
23.5-25	16744	ID	36	53	19.50x25-2.5	63.2	23.5	27.9	25.0	805.10	\$4,305.44
24.00-29	06792	ID	42	55	17.00x29-3.5	76.4	25.9	32.7	29.1	1,325.42	\$6,403.40
21.00-35	16781	ID	40	58	15.00x35-3.0	78.9	22.8	36.8	24.5	1,172.28	\$6,973.26
24.00-35	06749	ID	48	60	17.00x35-3.5	84.5	26.1	39.0	28.0	1,609.80	\$9,173.00
33.25-35	16749	ID	44	59	27.00x35-3.5	88.5	33.6	38.7	35.5	1,999.00	\$10,351.21

* Tube Type

Y532

- Designed for yard service vehicles at steel mills.
- Provides excellent steering stability and minimizes uneven tread wear.



Size	Part #	Compound	Ply	Groove Depth	Rim Size	INFLATED DIMENSIONS				Ship Weight	Base Price
						Overall Diameter (inches)	Overall Width (inches)	Static Loaded Radius (inches)	Static Loaded Width (inches)		
14.00-25	53201	ID	24	41	10.00x25	53.7	15.2	24.5	16.7	452.00	\$2,438.22

Y523

PARTICULAR SERVICE/ PORT SERVICE

- For use on dump trucks in high-abrasion conditions
- Flush pattern gives good cut resistance & long service life



Size	Part #	Compound	Ply	Groove Depth	Rim Size	INFLATED DIMENSIONS				Ship Weight	Base Price
						Overall Diameter (inches)	Overall Width (inches)	Static Loaded Radius (inches)	Static Loaded Width (inches)		
1800-25	02343	ID	40	77	13.00x25-2.5	65.0	20.4	30.4	21.3	831.90	\$4,539.15
18.00-33	02325	ID	36	71	13.00x33-2.5	72.8	20.4	34.2	21.3	1,005.90	\$6,203.71
18.00-33	02312	CPC/ID	36	71	13.00x33-2.5	72.8	20.4	34.2	21.3	1,020.80	\$6,203.70
18.00-33	05326	ID	40	71	13.00x33-2.5	72.8	20.4	34.2	21.3	1,011.00	\$6,250.00
18.00-33	02335	ID/STL	40	71	13.00x33-2.5	72.8	20.4	34.2	21.3	1,097.30	\$6,318.43
24.00-35	16776	ID	42	60	17.00x35-3.5	85.4	26.5	37.8	29.3	1,575.72	\$9,049.56
36.00-51	05230	CPC/ID	58	116	26.00x51-5.0	125.9	40.9	58.1	42.9	5,904.63	\$34,030.23
40.00-57	02338	ID	76	122	29.00x57-6.0	138.8	44.4	63.9	47.2	7,979.00	\$44,375.28



Y525 L-5

TUBE TYPE

- For use on loaders used in underground mining operations
- Extra-deep tread gives long service & outstanding cut resistance

Size	Part #	Compound	Ply	Groove Depth	Rim Size	INFLATED DIMENSIONS				Ship Weight	Base Price
						Overall Diameter (inches)	Overall Width (inches)	Static Loaded Radius (inches)	Static Loaded Width (inches)		
12.00-24	52503	CPC	20	74	8.50VX24	50.2	13.0	23.4	14.2	309.76	\$1,477.37



Y92

PARTICULAR SERVICE

- For use on straddle-carriers in container handling operations & for towing tractors used in airports
- Large tread width provides good traction on paved ground surfaces

Size	Part #	Compound	Ply	Groove Depth	Rim Size	INFLATED DIMENSIONS				Ship Weight	Base Price
						Overall Diameter (inches)	Overall Width (inches)	Static Loaded Radius (inches)	Static Loaded Width (inches)		
16.00-25	09202	RER	28	40	11.25x25-2.0	58.3	17.5	26.6	19.1	637.77	\$3,621.34

Y69ET L-4S



- For use on industrial vehicles including forklifts and straddle carriers
- For use on loaders, underground vehicles, container handlers and port equipment
- Extra-deep tread & reinforced sidewalls offer superior resistance to damage & wear

Size	Part #	Compound	Ply	Groove Depth	Rim Size	INFLATED DIMENSIONS				Ship Weight	Base Price
						Overall Diameter (inches)	Overall Width (inches)	Static Loaded Radius (inches)	Static Loaded Width (inches)		
12.00-24	06913	ID	20	56	8.50VX24	49.4	12.9	23.2	13.7	356.91	\$1,608.91
14.00-24	06914	ID	30	59	10.00WX24	53.7	15.4	25.6	15.9	469.40	\$2,234.00
16.00-25	06919	ID	32	53	11.25X25-2.0	60.4	17.2	27.9	18.7	683.68	\$2,898.73
18.00-25	06936	ID/CPC	32	74	13.00X25-2.5	64.5	21.1	29.7	22.5	918.00	\$4,421.55
18.00-25	06915	ID	40	74	13.00X25-2.5	64.5	21.1	29.7	22.5	1,003.10	\$4,422.30
18.00-25	06940	ID	40	74	13.00X25-2.5	64.5	21.1	29.7	22.5	1,008.16	\$4,572.70
21.00-25	06972	ID	40	71	15.00x25-3.0	70.1	23.5	31.3	25.4	1,170.17	\$6,732.47
26.5-25	06963	CP	32	87	22.00X25-3.0	70.8	27.2	31.4	28.2	1,310.40	\$7,091.22
21.00-35	06917	ID/CPC	42	81	15.00X35-3.0	80.2	23.6	36.2	25.6	1,574.50	\$8,693.29

Y69U L-4S/L-5S

UNDERGROUND MINE SERVICE REINFORCED WAVY SIDE PROFILE (WSP) & STEEL BREAKER



- For use on underground vehicles
- Extra deep tread and reinforced sidewalls

Size	Part #	Compound	Ply	Groove Depth	Rim Size	INFLATED DIMENSIONS				Ship Weight	Base Price
						Overall Diameter (inches)	Overall Width (inches)	Static Loaded Radius (inches)	Static Loaded Width (inches)		
12.00-24	06907*	CPSP	16	56	8.50Vx24	49.4	12.9	23.2	13.7	312.49	\$1,445.76
17.5-25	06941**	CPSP	20	87	14.00X25-1.5	54.7	16.9	25.6	17.9	561.50	\$2,999.00
18.00-25	06908**	CPSP	24	106	13.00x25-2.5	65.7	21.1	30.7	22.5	1,150.86	\$4,411.80
18.00-25	06937**	CPSP	28	106	13.00x25-2.5	65.7	21.1	30.7	22.5	1,180.20	\$4,591.00
18.00-25	06938**	CPSP	32	106	13.00x25-2.5	65.7	21.1	30.7	22.5	1,209.30	\$5,098.00

* L-4S ** L-5S



Y69U L-4S/L-5S (continued)

Size	Part #	Compound	Ply	Groove Depth	Rim Size	INFLATED DIMENSIONS		Static Loaded Radius (inches)	Static Loaded Width (inches)	Ship Weight	Base Price
						Overall Diameter (inches)	Overall Width (inches)				
26.5-25	06918	CSP	32	114	22.00x25-3.0	70.8	27.2	33.0	29.1	1,721.38	\$8,056.65
26.5-25	06971	CSP	36	114	22.00x25-3.0	70.8	27.2	33.0	29.1	1,811.34	\$8,701.19



Y69ET L-5S

- For use on loaders and underground vehicles
- Deep tread and reinforced sidewalls offer superior resistance to damage and wear

Size	Part #	Compound	Ply	Groove Depth	Rim Size	INFLATED DIMENSIONS		Static Loaded Radius (inches)	Static Loaded Width (inches)	Ship Weight	Base Price
						Overall Diameter (inches)	Overall Width (inches)				
12.00-24	06902	CPC	16	69	8.50VX24	50.4	13.1	23.8	14.0	325.67	\$1,550.30
14.00-24	06954	CPC	20	79	10.00WX24	53.7	15.0	25.7	15.5	460.40	\$2,186.00
17.5-25	06952	CPC	16	87	14.00X25-1.5	54.7	16.9	25.6	17.9	561.50	\$2,365.29
17.5-25	06955	CPC	20	87	14.00X25-1.5	54.7	16.9	25.6	17.9	581.70	\$2,795.52
18.00-25	06932	CPC	28	105	13.00X25-2.5	65.0	21.0	30.7	22.5	968.40	\$4,499.41
18.00-25	06906	CPC	32	105	13.00X25-2.5	65.0	21.0	30.7	22.5	1,187.30	\$4,912.69
18.00-25	06916	ID	40	105	13.00X25-2.5	65.0	21.0	30.7	22.5	1,074.21	\$5,321.00
20.5-25	06933	CPC	16	102	17.00X25-2.0	60.8	21.3	28.1	22.2	760.60	\$3,412.00
23.5-25	06935	CPC	20	117	19.50X25-2.5	64.4	24.3	29.4	25.7	1,062.20	\$4,612.00
26.5-25	06951	CPC	28	109	22.00X25-3.0	70.8	27.2	31.4	28.8	1,416.40	\$7,461.93
26.5-25	06905	CPC	32	109	22.00X25-3.0	70.8	27.2	31.4	28.8	1,696.70	\$7,827.85

* Tube Type



Y69 L-5S (with side protector)

- For use on loaders and underground vehicles
- Extra deep tread and reinforced sidewalls

Size	Part #	Compound	Ply	Groove Depth	Rim Size	INFLATED DIMENSIONS		Static Loaded Radius (inches)	Static Loaded Width (inches)	Ship Weight	Base Price
						Overall Diameter (inches)	Overall Width (inches)				
29.5-29	06965	CPC	34	136	25.00X29-3.5	79.5	30.8	36.9	32.3	2,266.80	\$10,231.00

