

YK520

A Performance Evolution For The Daily Drive

Building on the success of its heritage, the YK520 is a new evolution in performance, offering today's drivers all-season handling, long mileage and a comfortable ride. With a size line-up including 18- and 20-inch fitments, the YK520 is ideally suited for the latest sedans and cross-over SUVs.

Engineered For High Performance

Asymmetric Tread Design

Provides confident traction across all weather conditions.

All-season handling is enhanced with heavy siping and optimally placed grooves on the inside of the tread while the larger reinforced blocks on the outer tread promote **excellent cornering grip**. The asymmetrical design also helps **reduce the irregular wear** often associated with conventional, high-performance directional designs.

Designed For All-Season

Wet & Dry Traction

Multiple Cross Grooves and Heavy Siping

Provide more biting edges for additional grip in inclement weather.

Four Circumferential Grooves

Quickly evacuate water for increased wet handling and stopping capabilities.

Built For Long Mileage And Even Treadwear

Tapered Tread Blocks

Combat irregular wear for longer mileage and increased comfort.

Increased UTQG Treadwear Rating

Designed for long, even wear, YK520 is backed by a 60,000 Mile Limited Warranty on most sizes, an increased UTQG treadwear rating of 520. Along with this greater longevity, the YK520's advanced technology allows for increased wet and dry performance.

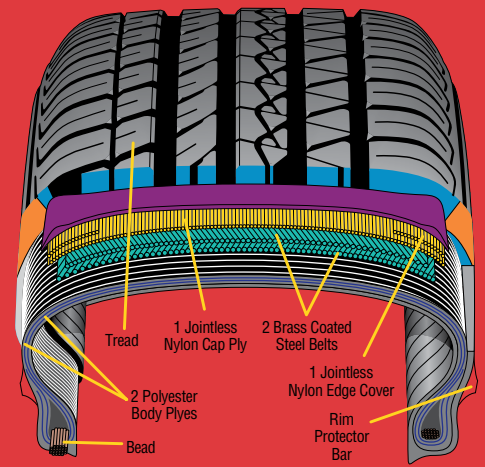
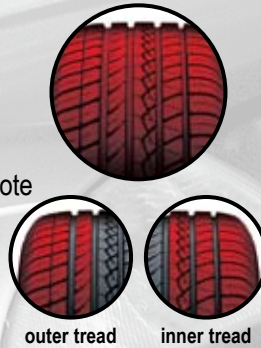
Smooth Riding Comfort

Variable Pitch Technology

Creates a more comfortable ride by reducing pattern noise and minimizing uneven wear.

Progressive Rate Sidewall Design

Increases upper sidewall flexibility and lower sidewall rigidity for enhanced handling and ride comfort.



Construction may vary by size.

For Vehicles Mentioned Below And Many Others:

- Audi A4
- BMW 3-Series
- Chrysler 300
- Dodge Magnum, and Charger
- Ford Mustang
- Honda Accord
- Lexus IS300, MX300
- Nissan Altima, Maxima, and Murano
- Saturn VUE
- Toyota Camry, Solara, and Highlander
- Volkswagen Golf, Jetta, and Passat

Assurance Of Value

- UTQG 520/A/A
- M+S All-Season Rating
- H- & V-Speed Ratings
- 60,000-Mile Limited Treadwear Warranty on 15" - 17" sizes, excluding 45 series

Experience the Uncompromising Performance of Yokohama.
Experience YK520.

 YOKOHAMA

DISCOUNT
TIRE CO. INC.
AMERICA'S
TIRE CO.

YK520



Size Chart

Tire Size	Part No.	UTQG Rating	Measuring Rim Width	Approved Rim Width	Overall Width	Overall Diameter	Tread Width	Tread Depth (32/in)	Static Radius	Revs Per Mile	Max Load Cold Inflation Pressure
185/65R15 88H	31715	520/A/A	5.5	5.0 - 6.5	7.5	24.5	5.6	10	11.2	848	1235@51
195/55R15 85H	31710	520/A/A	6.0	5.5 - 7.0	7.9	23.5	6.7	10	10.8	885	1135@51
195/60R15 88H	31706	520/A/A	6.0	5.5 - 7.0	8.0	24.3	6.2	10	11.1	856	1235@51
195/65R15 91H	31704	520/A/A	6.0	5.5 - 7.0	7.9	25.0	5.9	10	11.4	831	1356@51
205/60R15 91H	31705	520/A/A	6.0	5.5 - 7.5	8.2	24.7	6.5	11	11.3	840	1356@51
205/65R15 94H	31701	520/A/A	6.0	5.5 - 7.5	8.3	25.5	6.2	11	11.6	815	1477@51
P215/60R15 93H	31708	520/A/A	6.5	6.0 - 7.5	8.8	25.2	6.9	11	11.5	824	1411@51
215/65R15 96H	31716	520/A/A	6.5	6.0 - 7.5	8.9	26.1	6.9	11	11.8	796	1565@51
225/60R15 96H	31713	520/A/A	6.5	6.0 - 8.0	7.0	25.6	7.0	11	11.6	810	1565@51
205/50R16 87H	31714	520/A/A	6.5	5.5 - 7.5	8.3	24.1	7.1	11	11.2	862	1201@51
205/55R16 91H	31702	520/A/A	6.5	5.5 - 7.5	8.3	25.0	7.0	11	11.5	832	1356@51
P205/60R16 91H	31707	520/A/A	6.0	5.5 - 7.5	8.2	25.7	6.5	11	11.8	809	1356@51
P205/65R16 94H	31718	520/A/A	6.0	5.5 - 7.5	8.2	26.5	6.2	11	12.1	785	1477@51
215/55R16 93H	31711	520/A/A	7.0	6.0 - 7.5	8.9	25.4	7.3	11	11.6	819	1433@51
215/60R16 95H	31712	520/A/A	6.5	6.0 - 7.5	8.7	26.2	6.9	11	12.0	792	1521@51
215/65R16 98H	31719	520/A/A	6.5	6.0 - 7.5	8.7	27.0	6.9	11	12.3	769	1653@51
225/50R16 92H	31709	520/A/A	7.0	6.0 - 8.0	9.1	25.0	7.5	11	11.5	832	1389@51
225/55R16 95H	31717	520/A/A	7.0	6.0 - 8.0	9.1	25.8	7.3	11	11.8	804	1521@51
225/60R16 98H	31722	520/A/A	6.5	6.0 - 8.0	8.9	26.6	7.2	11	12.1	780	1653@51
P235/55R16 96H	31727	520/A/A	7.5	6.5 - 8.5	9.5	26.3	8.0	11	12.0	790	1565@51
P245/50R16 96H	31724	520/A/A	7.5	7.0 - 8.5	9.7	25.8	8.5	11	11.8	805	1546@51
205/50R17 93V	31736	520/A/A	6.5	5.5 - 7.5	8.1	25.3	7.2	11	11.6	822	1433@50
P215/50R17 93V	31721	520/A/A	7.0	6.0 - 7.5	8.7	25.7	7.6	11	11.9	808	1433@50
P215/55R17 93V	31720	520/A/A	7.0	6.0 - 7.5	7.3	26.3	7.3	11	12.1	790	1433@51
P215/60R17 95H	31732	520/A/A	6.5	6.0 - 7.5	8.5	27.3	7.2	11	12.5	760	1521@51
P215/65R17 98H	31733	520/A/A	6.5	6.0 - 7.5	8.7	28.1	6.9	11	12.8	739	1653@51
225/45R17 91H	31729	520/A/A	7.5	7.0 - 8.5	8.8	25.2	8.3	11	11.7	826	1356@51
225/50R17 94V	31725	520/A/A	7.0	6.0 - 8.0	8.9	26.1	7.9	11	12.0	797	1477@51
P225/55R17 95V	31703	520/A/A	7.0	6.0 - 8.0	9.1	26.8	7.3	11	12.3	776	1521@51
*225/65R17 101H	31737										
235/45R17 97V	31728	520/A/A	8.0	7.5 - 9.0	9.3	25.6	8.7	11	11.8	813	1609@50
235/55R17 99H	31723	520/A/A	7.5	6.5 - 8.5	9.5	27.3	8.0	11	12.5	760	1709@51
*235/65R17 104H	31738										
245/45R17 99V	31726	520/A/A	8.0	7.5 - 9.0	9.5	25.9	9.2	11	12.0	803	1709@50
225/40R18 92H	31731	520/A/A	8.0	7.5 - 9.0	10.2	25.1	9.3	11	11.8	820	1389@50
P225/55R18 97H	31735	520/A/A	7.0	6.0 - 8.0	9.1	27.9	7.3	11	12.9	745	1609@51
P225/60R18 99H	31734	520/A/A	6.5	6.0 - 8.0	9.0	28.7	7.2	11	13.2	724	1709@51
*235/55R18 99V	31741										
*235/65R18 104H	31739										
245/45R18 100V	31730	520/A/A	8.0	7.5 - 9.0	9.5	26.9	9.2	11	12.5	772	1764@50
*265/60R18 109V	31740										
*265/50R20 106V	31742										

*Available July 2006

Features and Benefits

Asymmetric Tread Design

Provides confident traction across all weather conditions. All-season handling is enhanced with heavy siping and optimally placed grooves on the inside of the tread while the larger reinforced blocks on the outer tread promote excellent cornering grip.

Multiple Cross Grooves and Heavy Siping

Provide more biting edges for additional grip in inclement weather.

Four Circumferential Grooves

Quickly evacuate water for increased wet handling and stopping capabilities.

Tapered Tread Blocks

Combat irregular wear for longer mileage and increased comfort.

Increased UTQG Treadwear Rating

Designed for long, even wear, YK520 is backed by a 60,000 Mile Limited Warranty on most sizes, an increased UTQG treadwear rating of 520.

Variable Pitch Technology

Creates a more comfortable ride by reducing pattern noise and minimizing uneven wear.

Progressive Rate Sidewall Design

Increases upper sidewall flexibility and lower sidewall rigidity for enhanced handling and ride comfort.



M-181-0306



Consumer Affairs: 1-800-722-9888

Corporate Headquarters: Fullerton, CA 1-714-870-3800, 1-800-423-4544

Visit our web site at www.yokohamatire.com