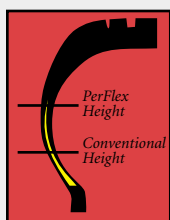


Yokohama AVID Touring

Security. Confidence. Safety.

Yokohama's AVID Touring is quietly pleasing discerning drivers everywhere. It's no wonder. AVID Touring offers a gratifying combination of comfort, value and capability.

Smooth, Quiet Ride.



PerFlex Sidewall Construction

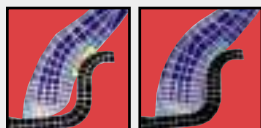
A new sidewall reinforcement concept utilizes a tapered hard rubber insert that provides better handling and improved ability to absorb bumps and vibrations.

Ride Comfort Index Comparison

Results of an independent test demonstrate that Yokohama PerFlex Construction increases comfort.

Rank/Tire	*Index
1. Yokohama PerFlex	100
2. Bridgestone Turanza T	95.4
3. Michelin X One	92.5
4. Goodyear Inflatred	91.6

*Higher index indicates better ride comfort.



Conventional Yokohama

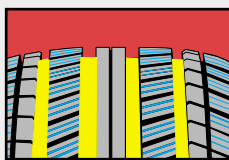
Contoured Bead Design

AVID Touring's new Contoured Bead Design enables better tire-to-rim fit for reduced friction, improved handling, increased durability and a smoother ride.

Improved, Wet Traction.

Four Wide Grooves

Optimum placement of these water-channeling grooves reduces hydroplaning and allows for increased rubber-to-road contact for outstanding all-weather handling.



Testing Above The Rest.

Wet Lateral Acceleration

Rank/Tire	*Index
1. AVID Touring	100
2. Firestone Affinity	101
3. Bridgestone Turanza T	102
4. Goodyear Inflatred	103

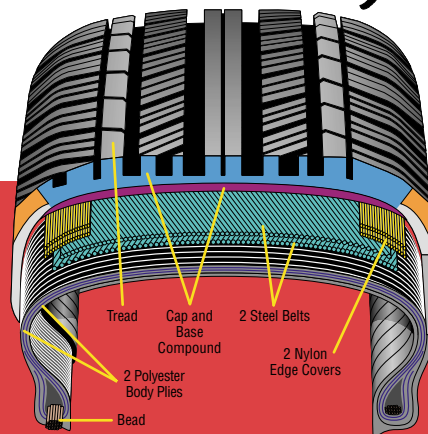
*Index represents time; lower number equals better performance.

When tested against the competition, the AVID Touring consistently comes out on top.

Data represents results from an independent testing laboratory. Comprehensive data is available upon request. For a copy of actual results, contact: Yokohama Tire Corporation, P.O. Box 4550, Fullerton, CA 92834-4550, Attn: AVID Testing.

AVID

Touring



Construction may vary by size.

For Vehicles Such As:

Buick Regal Dodge Intrepid
 Buick Park Avenue Ford Explorer
 Cadillac Seville SLS Ford Taurus
 Chevy Lumina Ford Windstar
 Dodge Caravan

Yokohama 30-Day Performance Promise

- Test drive the AVID Touring for 30 days. If you are not completely satisfied, bring them back for a full refund.†
- 80,000-Mile Limited Treadwear Warranty†



†See dealer for details.



AVID Touring Dimensional Data

Tire Size	Part No.	UTQG	Rim Width		Inflated Dimensions		Tread Width (Inches)	Tread Depth (32/Inches)	Loaded Dimensions		Maximum Load at Cold Inflation Pressure (lbs./psi)
			Measuring Rim Width (Inches)	Approved Rim Width (Inches)	Overall Width (Inches)	Overall Diameter (Inches)			Static Radius (Inches)	Revs. Per Mile	
P175/70R13 82S	31005	620/A/B	5.0	4.5-6.0	6.7	22.7	5.2	11	10.1	914	1036@35
P185/70R13 85S	31006	620/A/B	5.5	4.5-6.0	7.2	23.3	5.5	11	10.4	893	1135@35
P175/65R14 81S	31017	620/A/B	5.0	5.0-6.0	6.7	23.0	5.1	10	10.3	904	1019@35
P185/65R14 85S	31018	620/A/B	5.5	5.0-6.5	7.4	23.5	5.4	10	10.4	885	1124@35
P185/70R14 87S	31007	620/A/B	5.5	4.5-6.5	7.2	24.3	5.4	11	10.9	855	1201@35
P185/70R14 87S*	31008	620/A/B	5.5	4.5-6.0	7.2	24.3	5.4	11	10.9	855	1201@35
P185/75R14 89S*	31001	620/A/B	5.0	4.5-6.0	7.0	25.0	4.9	11	11.2	831	1290@35
P195/70R14 90S	31009	620/A/B	6.0	5.0-6.5	7.8	24.8	5.8	11	11.0	838	1312@35
P195/75R14 92S*	31002	620/A/B	5.5	5.0-6.5	7.4	25.6	5.2	11	11.4	812	1400@35
P205/70R14 93S	31010	620/A/B	6.0	5.0-7.0	8.1	25.4	6.1	11	11.2	818	1433@35
P205/70R14 93S*	31011	620/A/B	6.0	5.0-7.0	8.1	25.4	6.1	11	11.2	818	1433@35
P205/75R14 95S*	31003	620/A/B	5.5	5.0-7.0	7.8	26.2	5.6	11	11.5	792	1532@35
P215/70R14 96S*	31012	620/A/B	6.5	5.5-7.0	8.5	25.9	6.5	11	11.4	801	1554@35
P195/60R15 87S	31021	620/A/B	6.0	5.5-7.5	7.9	24.3	5.9	11	10.9	857	1190@35
P205/60R15 90S	31022	620/A/B	6.0	5.5-7.5	8.2	24.7	6.1	11	11.1	841	1301@35
P205/65R15 92S	31019	620/A/B	6.0	5.5-7.5	8.3	25.5	6.2	11	11.3	816	1400@35
P205/70R15 95S	31013	620/A/B	6.0	5.0-7.0	8.1	26.3	6.3	11	11.6	789	1499@35
P205/70R15 95S*	31014	620/A/B	6.0	5.0-7.0	8.1	26.3	6.3	11	11.6	789	1499@35
P205/75R15 97S*	31004	620/A/B	5.5	5.0-7.0	8.2	27.1	5.6	11	12.0	766	1598@35
P215/65R15 95S	31020	620/A/B	6.5	6.0-7.5	8.9	26.0	6.5	11	11.5	799	1510@35
P215/70R15 97S*	31015	620/A/B	6.5	5.5-7.0	8.5	26.9	6.5	11	11.9	771	1620@35
P235/70R15 102S*	31016	620/A/B	6.5	6.0-8.0	9.2	28.0	7.0	11	12.8	742	1896@35
P235/75R15 105S*	31025	620/A/B	6.5	6.0-8.0	9.4	28.8	6.4	12	12.9	721	2028@35
P215/60R16 94S	31023	620/A/B	6.5	6.0-7.5	8.6	26.2	6.5	11	11.8	794	1477@35
P225/60R16 97S	31024	620/A/B	6.5	6.0-8.0	8.9	26.6	6.8	11	11.6	780	1609@35

*Whitewall

AVID Touring Features & Benefits

Feature	Contoured Bead Design	PerFlex Sidewall Construction	Four Wide Circumferential Grooves	Sipes	Tri-Plex Compound	80,000-Mile Limited Treadwear Warranty*	30 Day Free Trial*
Benefit	Improves bead-to-rim fit for a smoother ride.	Utilizes a tapered hard rubber insert to help absorb bumps and vibrations.	Provide outstanding water-channeling ability.	Enable improved water evacuation and more flexible tread blocks.	Increases the life of the tread.	Ensures long life and peace of mind.	Test drive for 30 days. Return if not completely satisfied.

*See dealer for details.

