

Yokohama Geolandar I/T+ Build your winter driving confidence with increased ice and snow traction

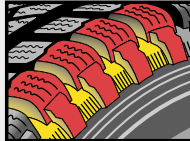
GEOLANDAR
I/T+

Geolandar I/T+ was designed especially for traveling along winter roads. It gives your SUV or light truck the traction necessary to handle inclement driving conditions.

Geolandar I/T Winter Tread Design

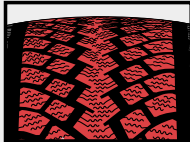
Improved Cornering In Snow

Stepped shoulder and large shoulder grooves cut into snow on the side of the tire to improve grip while cornering.



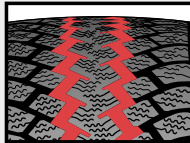
Directional Tread Pattern Resists Hydroplaning And Improves Dry Road Stability

On wet surfaces, the directional tread pattern pushes water out from under the tread as the tire rotates to enhance wet traction. Smaller tread grooves and larger tread blocks increase traction and stability on dry roads.



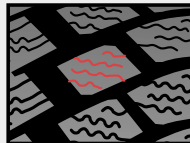
ZigZag Interior Grooves Improve Snow Performance

The zigzag interior grooves create long, continuous, sharp-biting edges that cut through water film and grab more snow for greater traction.



Wave-Shaped Sipes Improve Ice Traction

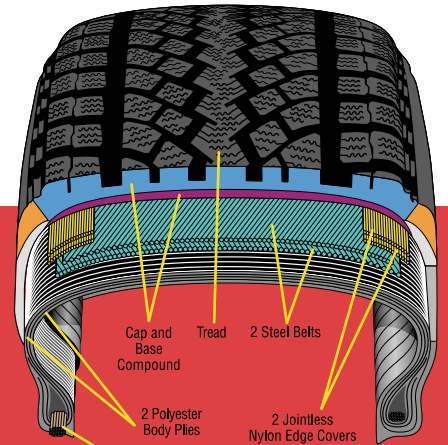
The Geolandar I/T+'s wave-shaped sipes increase the number of biting edges which act like a squeegee to cut through water film and allow the low-temperature rubber compound to grip the icy surface.



Geolandar I/T Compound Technology Improves Ice Traction

New Silica Tread Compound


New silica tread compound maintains excellent snow traction while improving performance in wet and dry conditions.



Construction may vary by size.

For Vehicles Such As:

- | | |
|--------------------|---------------------|
| Chevrolet Blazer | Ford Ranger |
| Chevrolet K-Series | Jeep Cherokee |
| Chevrolet S-10 | Mercedes ML Class |
| Chevrolet Suburban | Toyota 4Runner |
| Chevrolet Tahoe | Toyota Tacoma |
| Dodge Dakota | Toyota Land Cruiser |
| Ford Explorer | Nissan Pathfinder |
| Ford F-Series | |

- Geolandar I/T+ exceeds industry standards for severe snow rating 
- T-Speed Rated up to 118 mph on all Metric sizes
- Q-Speed Rated up to 99 mph on LT-Metric and Flotation sizes



 **YOKOHAMA**

Geolandar I/T+ Size Listings

Tire Size	Part No.	Unit Weight (lbs)	Rim Width		Inflated Dimensions		Tread Width (Inches)	Tread Depth (32/Inches)	Loaded Dimensions		Maximum Load at Cold Inflation Pressure (lbs.psi)	Maximum Dual Load at Cold Inflation Pressure (lbs.psi)	Type
			Measuring Rim Width (Inches)	Approved Rim Width (Inches)	Overall Width (Inches)	Overall Diameter (Inches)			Static Radius (Inches)	Revs. Per Mile			
195/80R15 96T	07131	24.84	5.5	5.0 - 6.5	7.8	27.5	6.4	13	12.4	755	1565@35		OBL
205/70R15 96T	07132	23.55	6.0	5.0 - 7.0	8.2	26.6	6.7	13	12.0	780	1565@35		OBL
215/80R15 102T	07135	29.52	6.0	5.5 - 7.0	8.5	28.8	7.0	14	12.9	722	1874@35		OBL
225/70R15 100T	07137	28.27	6.5	6.0 - 7.5	9.1		7.4	13	12.5	749	1764@35		OBL
235/70R15 103T	07140	30.25	No Technical Data Available										OBL
225/80R15 105T	07138	30.88	6.0	6.0 - 7.5	9.1	29.3	7.4	14	13.1	708	2039@35		OBL
265/70R15 112T	07146	37.30	8.0	7.0 - 9.0	10.9	29.8	8.7	15	13.3	696	2469@35		OBL
215/65R16 98T	07133	25.61	6.5	6.0 - 7.5	8.7	27.2	7.0	13	12.4	765	1653@35		OBL
215/70R16 100T	07134	26.26	6.5	5.5 - 7.0	8.7	28.1	7.0	13	12.7	739	1764@35		OBL
215/80R16 103T	07136	30.84	6.5	5.5 - 7.0	8.6	29.7	7.0	14	13.4	699	1929@35		OBL
235/70R16 106T	07141	32.88	7.0	6.0 - 8.0	9.6	29.1	7.7	14	13.1	715	2094@35		OBL
235/60R16 100T	07139	26.46	7.0	6.5 - 8.5	9.3	27.2	7.2	13	12.4	765	1764@35		OBL
235/80R16 109T	07142	37.44	6.5	6.0 - 8.0	9.4	30.8	7.7	14	13.8	675	2271@35		OBL
245/70R16 107T	07143	34.72	7.0	6.5 - 8.0	9.7	29.8	8.0	14	13.4	698	2149@35		OBL
255/65R16 109T	07144	35.12	7.5	7.0 - 9.0	10.3	29.1	8.3	14	13.1	713	2271@35		OBL
255/70T16 111T	07145	37.74	7.5	6.5 - 8.5	10.3	30.1	8.3	15	13.5	690	2403@35		OBL
265/70R16 112T	07147	38.85	8.0	7.0 - 9.0	10.9	30.9	8.7	15	13.8	673	2469@35		OBL
275/70R16 114T	07148	42.52	8.0	7.0 - 9.0	11.1	31.4	9.0	15	14.0	661	2601@35		OBL
LT285/75R16 116Q	07150	51.85	8.0	7.0 - 9.0	11.6	33.1	9.3	19	15.2	628	2755@50	2535@50	OBL
LT315/75R16 113Q	07151	65.39	8.5	8.0 - 10.0	12.5	34.6	10.3	20	15.9	600	2535@35		OBL
31X10.50R15 109Q	07149	42.41	8.5	7.0 - 9.0	10.8	30.7	8.7	19	14.2	676	2270@50		OBL

Appropriate Minus-Zero Fitments

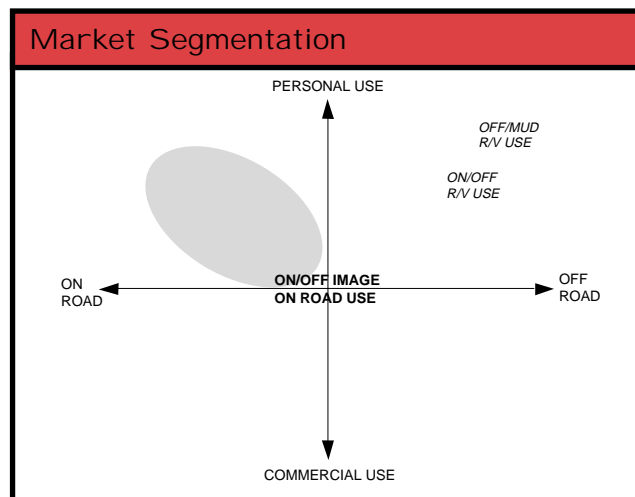
During the winter driving season, a narrower footprint offers greater traction on snow-covered surfaces. To the right are Yokohama's suggested minus-zero fitments for the most common OE tire sizes. You must ensure the load index (or maximum load) of your original tire is the same or smaller than Geolandar I/T+ minus-zero fitment.

OE Fitment	Minus Fitment
------------	---------------

P245/75R16 109	➔	235/80R16 109T
P225/75R15 102	➔	215/80R15 102T
P235/75R15 105	➔	225/80R15 105T

Geolandar I/T+ Features & Benefits

Feature	Directional Tread Design	ZigZag Grooves	Wave-Shaped Sipes	Stepped Shoulder	New Silica Tread Compound	Severe Snow Rating
Benefit	Resists hydroplaning and improves dry road stability.	Improve ice and snow traction.	Cut through water film to enhance ice traction.	Cuts into snow to improve grip while cornering.	Maintains excellent snow traction while improving performance in wet and dry conditions.	For confident driving in severe weather conditions.



Consumer Affairs: 1-800-722-9888
 Corporate Headquarters: Fullerton, CA 1-714-870-3800, 1-800-423-4544
 Visit our Web site at: www.yokohamatire.com