

## A REVOLUTIONARY DRIVE TIRE THAT CAN ACTUALLY DRIVE YOUR BOTTOM LINE.

Introducing the 703ZL™. The first tire born of a revolutionary concept we call Z.environment™. Utilizing the latest advances in tire technology, we developed a compound, tread design and casing construction that offer longer treadwear and the lowest rolling resistance in the category.

### Longer Treadwear

The deepest original tread depth of any line haul drive tire in the industry (32/32). This enables the 703ZL to deliver extremely long original treadwear.

### Superior Fuel Economy

The all-new compound utilizes Z.environment technology to produce stronger and more pliable rubber. Drive tires with deep tread designs typically create a lot of heat during normal usage, shortening the life of the tread and casing. Our compound significantly reduces heat build up, improves treadwear and provides the lowest rolling resistance in its category.

### More Even Treadwear

Casing innovations derived from Z.environment technology allow us to actually predict changes in tire shape that occur in early stages of wear. The result is increased durability due to stabilized performance over the life of the tire.

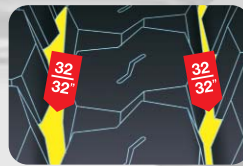
The 703ZL's revolutionary casing, backed by a 7-year warranty, combines with our latest compound technology to distribute contact pressure more evenly across the tread surface for longer more even treadwear.

### Enhanced Traction & Comfort

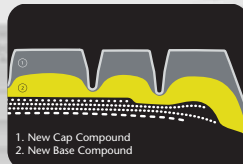
The funnel-shaped grooves are wider at the top for enhanced traction, yet narrow at the base to prevent stones from traveling to the bottom. In addition, the design provides superior comfort and increases block rigidity for further resistance against uneven wear.



Z.environment offers proof that technology can greatly enhance performance while delivering better results for the environment. Through advanced tread designs, compounds, casing construction and manufacturing processes, Z.environment does more than reduce fuel consumption, waste and pollution. It can reduce your costs significantly.



Deeper Groove Depth



New Base Compound makes up 52% of total tread compound and combats heat build-up.



The actual tire growth is precisely predicted.



703ZL Footprint: indicates even contact pressure across the tread's shoulder and central section.



Funnel Shaped Groove Wall



# 703ZL

## SPECIFICATIONS

Tire Size	Ply rating (L.R.)	Rim Size		Inflated Dimensions		Loaded Dimensions				Part #
		Meas.	Alt	Overall Width (Inch)	Overall Diameter (Inch)	Groove Depth (1/32")	Section Width (Inch)	Static Radius (inch)	Rev/Mile	
295/75R22.5	14G	9.00	8.25	11.4	40.9	32	12.5	19.1	510	77101
11R22.5	14G	8.25	7.50	11.0	42.3	32	12.1	19.7	494	77102

Yokohama tires are subject to an ongoing development process. Yokohama Tire Corporation reserves the right to change product specifications at any time without notice or obligation. Not all models and sizes available in all locations.

## YOKOHAMA SPECIAL CASING WARRANTY (ADDITION TO YOKOHAMA STANDARD LIMITED TRUCK TIRE WARRANTY)

### Eligibility

This warranty applies to all Yokohama radial truck/bus tires, size 8.25 or larger, which have been used only in highway operations, and which meet the following criteria:

- Tires must be or have been retreaded by a Yokohama approved Retreading Process.
- Tires must be or have been inspected by a Yokohama approved non-destructive tire casing process prior to any retreading, and be so identified.

### SEVEN-YEAR, THREE RETREAD WARRANTY CREDIT AMOUNTS FOR 703ZL

SIZE	INSPECTION PRIOR TO 1ST RETREAD	1ST RETREAD LIFE	2ND RETREAD LIFE	3RD RETREAD LIFE
295/75R22.5, 11R22.5	\$110.00	\$90.00	\$70.00	\$40.00

If a warrantable condition is found during the inspection or buffing process, the casing warranty credit will be paid at the amount of the next retread life.

### WHAT IS WARRANTED AND FOR HOW LONG

Prior to the retreading process, Yokohama radial truck/bus tires are covered by all provisions of the Yokohama Standard Limited Warranty for Truck and Bus Tires. After the retread has been applied on the qualified tire, an additional special casing warranty applies. If a qualified tire becomes unserviceable due to a warrantable condition, the customer will be given a casing credit, as indicated in the chart below. The retread life is defined as beginning with the installation of the new retread stock.

### WHAT IS NOT COVERED

- Casings retreaded more times than provided by the applicable warranty listed above.
- Casings submitted for claims more than four years after the date of manufacture as indicated by the Department of Transportation (DOT) serial number.
- Casings damaged by road hazard injuries or damages caused by obstacles or debris on highway, such as cuts, punctures (whether repairable or not), snags, bruises, tears, abrasions, or impact breaks.
- Casings used at any time in an off-highway application.
- Casings damaged by improper repairs or repairs that have failed.
- Casings damaged by improper inflation or other maintenance abuses.
- Casings damaged by continued operation while flat or severely underinflated.
- Casings damaged by improper application of tire size and/or specification.
- Casings damaged by improper mounting/dismounting procedures or tire/wheel assembly imbalance.
- Casings damaged by accident, corrosion, vandalism, fire, or nature.
- Casings damaged by use of aftermarket tire additives, such as fillers, sealants, or balancing substances.
- Casings damaged by improper retreading or defective retread materials.
- Casings that cannot be retreaded because of excessive treadwear or buffing.
- Casings retreaded in a facility not using a Yokohama approved retreading process.
- Tires covered by Yokohama Standard Limited Warranty (4/32" or more of original tread remaining).
- Tires branded by Yokohama to note special classifications at time of purchase, such as "NA" (non-adjustable), or tires altered by notching or buffing.
- Tires on vehicles registered or operated outside the United States.
- Tires not sold in the United States by Yokohama Tire Corporation.

### LIMITATIONS AND EXCLUSIONS

All implied warranties, including any warranty of merchantability or fitness for a particular purpose, are expressly limited to the duration of this written warranty.

All obligations or liabilities for loss of time, inconvenience, vehicle use, or any other incidental or consequential damages are hereby excluded. Some states do not allow limitations on how long an implied warranty lasts, or the exclusion or limitation of incidental or consequential damages, so the above limitations and exclusions may not apply. This warranty gives the customer legal rights that may vary from state to state.

The customer is advised to determine those rights for their local area and exercise them as required or deemed appropriate.

### CUSTOMER'S OBLIGATIONS

The customer must present the claim tire to an authorized Yokohama dealer, with certification that the tire was retreaded by an approved Yokohama retreading process and inspected by a Yokohama approved non-destructive tire casing analyzer. The customer is required to pay the adjusted price of the new tire (dealer's current retail selling price at the time of adjustment, less credit allowance) and taxes. The cost of mounting, balancing, and any other service charges or applicable taxes are also payable by the customer.

Corporate Headquarters  
P.O. Box 4550  
Fullerton, California 92834-4550  
800.423.4544  
714.870.3800

Commercial Customer Service  
For Dealer Orders Call: 800.241.7051  
Dealer Fax Orders: 800.455.9656  
770.932.0560

Consumer Affairs  
800.722.9888

Remember to register your Yokohama tires either on-line at [yokohamatire.com](http://yokohamatire.com) or by mail. Mail-in registration cards are available at authorized Yokohama dealers.

