

EXCEPTIONAL PERFORMANCE IN A PREMIUM, LONG HAUL, DRIVE AXLE TIRE

The TY577 is Yokohama's premium drive axle tire, designed to tackle the most demanding needs of the long haul trucker. Long even wear, great fuel mileage, muscle to spare, and the finest recappable casing are the industry-leading qualities that make the TY577 worthy of being your designated drive axle tires. Its cutting-edge design is intended to deliver best-in-class performance. Just compare it against any competitor on the market today.

Deep Groove Depth

With one of the deepest tread depths in the industry, extremely long original tread wear can be expected. Special design considerations permit firm road grip while minimizing heat generation, allowing for the full benefit of very deep tread grooves.



Deep Groove Depth

Stress Wear Control Groove

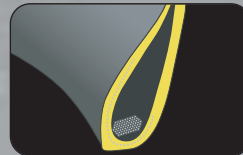
This specifically-positioned groove redistributes the load on the outside rib, greatly reducing the occurrence of shoulder step down wear.



Stress Wear Control Groove

Contoured Bead Shape

This exclusive bead design allows the tire to seat evenly against the rim for extremely high uniformity levels around the entire circumference for better tire-to-rim fit, reduced friction, smoother ride, and long even wear.



Contoured Bead Shape

Closed Shoulder Rib

More rubber on the outside ribs means more miles. The distinctive closed shoulder enables more rubber to road contact.



Closed Shoulder Rib

Funnel Shape Groove Wall

The optimal groove shape is wider at the top for enhanced traction, yet narrows at the bottom to prevent stones from traveling to the bottom. It increases block rigidity for added traction, enhanced resistance against uneven wear and superior ride comfort.



Funnel Shape Groove Wall

PURE YOKOHAMA TECHNOLOGY

TY577 is equipped with the latest Yokohama premium design concepts to meet stringent, modern fleet performance demands.



Our Maintenance Saving Concept reduces maintenance costs while maximizing tire performance and reducing down time.



Our STEM-2 technology extends the life of the casing by redirecting normally destructive stress forces.



TY577

SPECIFICATIONS

Tire Size	Ply Rating (L.R.)	Rim Size		Inflated Dimensions			Loaded Dimensions			Part #
		Meas.	Alt	Overall Width (Inch)	Overall Diameter (Inch)	Groove Depth (1/32")	Section Width (Inch)	Static Radius (Inch)	Rev/Mile	
295/75R22.5	14G	9.00	8.25	11.4	40.9	30	12.4	19.1	513	57701
11R22.5	14G	8.25	7.50	10.9	42.3	30	12.0	19.6	495	57702
285/75R24.5	14G	8.25	...	10.9	42.2	30	12.0	19.6	496	57703
11R24.5	14G	8.25	7.50	10.9	44.3	30	12.0	20.7	472	57704

Yokohama tires are subject to an ongoing development process. Yokohama Tire Corporation reserves the right to change product specifications at any time without notice or obligation. Not all models and sizes available in all locations.

Corporate Headquarters
P.O. Box 4550
Fullerton, California 92834-4550
800.423.4544
714.870.3800

Commercial Customer Service
For Dealer Orders Call: 800.241.7051
Dealer Fax Orders: 800.455.9656
770.932.0560

Consumer Affairs
800.722.9888

Remember to register your Yokohama tires either on-line at yokohamatire.com or by mail. Mail-in registration cards are available at authorized Yokohama dealers.



www.yokohamatire.com

M-307-0507